

12V LiFePO4 Lithium Battery Pack 200Ah Energy Storage Battery Solar Lithium Ion Batteries

Our Product Introduction

for more products please visit us on enookbattery.com

Basic Information

- Place of Origin: china
- Brand Name: Enook
- Model Number: Enook Battery Pack
- Payment Terms: TT PAYPAL



Product Specification

- Continuous Discharge Current: 120A
- Peak Current: 240A (<3s)
- Charge Voltage: 14.6V±0.2V
- Installation: IP65
- BMS Function: Overcharge, Overdischarge, Overcurrent, Short Circuit, Etc.
- Product Name: 12.8V 150ah Lifepo4 Battery Pack
- Terminal Type: Anderson Plug
- Battery Size: 560x300x235mm
- Highlight: **200Ah Lithium ion Batteries, Solar Lithium ion Batteries, 12V Lithium ion Batteries**



More Images



Product Description

Product Description:

With a deep cycle life of 4000 times, this battery pack is built to last for more than 10 years, providing you with long-lasting power that you can rely on. Its discharge cut-off voltage is set at 10V, ensuring that your battery pack is protected against over-discharging, which can lead to damage and reduced performance.

One of the most impressive features of this battery pack is its BMS function, which provides overcharge, over-discharge, over-current, short circuit, and other protection mechanisms. This ensures that your battery pack is always safe, secure, and protected against any potential risks or hazards.

So why wait? Get your hands on the Lithium Ion Electric Bike Battery Pack today. With its impressive specifications and features, you can be sure that you're getting the best value for your money. Order now!

12V150AH LiFePO4 Battery

RV/home energy storage/PV/solar off-grid



Dimensions

Product View

L*H*W:520*238*220mm



Reliable ABS Case
Resistance To Heat&Shock



M8 Terminal
superb conductivity



Handle
Easy to carry or remove

Features:

Product Name: Lithium Ion Battery Pack

Peak current: 240A (<3s)

Battery size: 560x300x235mm

Specification: 12.8V150AH

Charge Voltage: 14.6V±0.2V

Terminal Type: Anderson Plug
Compatible with 12.8v 120ah battery pack
Perfect for lithium ion electric bike battery pack

LiFePO4 Battery

More Safe Density,High Life,Long Cycle times 3000+



BATTERY MANAGEMENT SYSTEM



Balance Function



Overvoltage Protection



Overcharge Protection



Over discharge Protection



Overcurrent Protection



Short circuit Protection

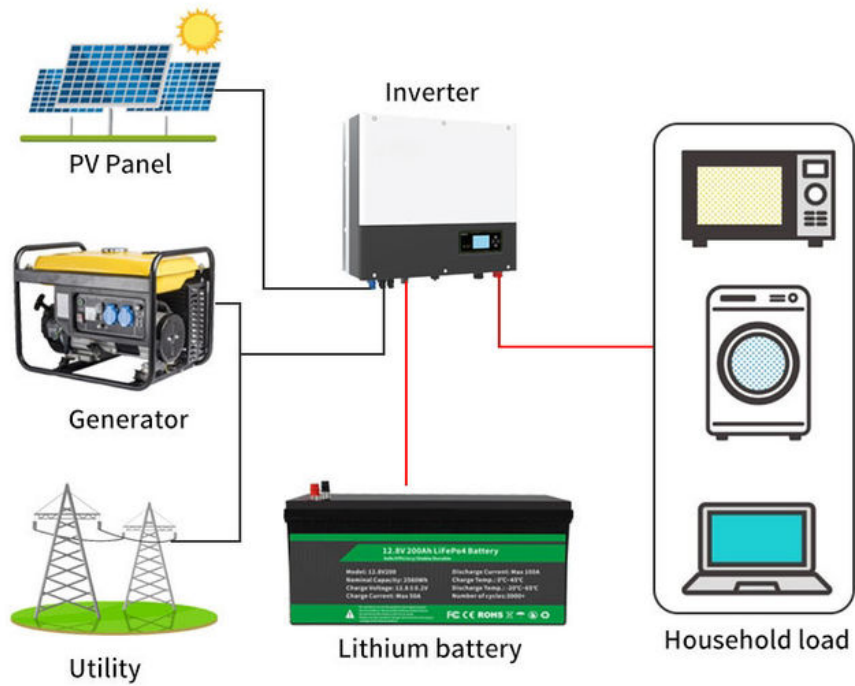


Temperature Protection



Anti Reverse Charging

Product Connection Diagram



Technical Parameters:

Lithium Ion Battery Pack	12.8V 150Ah Battery Pack
Life Cycle	2000 times at 85% dose, 5000 times at 65% dose, and 8000 times at 40% dose
Continuous Discharge Current	120A
Terminal Type	Anderson Plug
OEM/ODM	Acceptable
Cycle Life	Deep Cycle Life 4000 Times, Life Span Is More Than 10 Years
Energy Storage	1920Wh
Charge Voltage	14.6V±0.2V
Battery Size	560x300x235mm
Discharge Cut-off Voltage	10V
Peak Current	240A (<3s)



Applications:

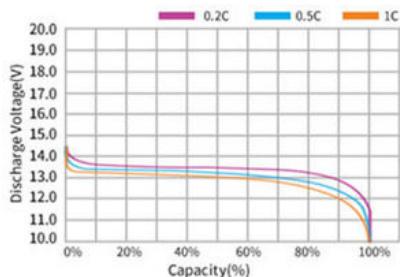
The Enook Battery Pack is ideal for a wide range of product application occasions and scenarios. The Enook Battery Pack is also a great option for portable power solutions, such as camping and outdoor activities, as well as for backup power supplies for homes and businesses.

The Enook Battery Pack is designed to provide exceptional performance, with a charge voltage of $14.6V \pm 0.2V$ and a peak current of 240A (<3s). It has a long lifespan, with a life cycle of 2000 times at 85% dose, 5000 times at 65% dose, and 8000 times at 40% dose. This makes it a reliable and cost-effective choice for those who require a durable and long-lasting battery pack.

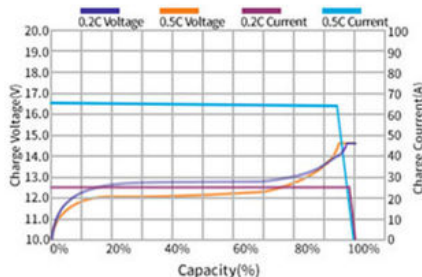
Overall, the Enook Battery Pack is a versatile and high-quality product that can be used in a variety of scenarios and applications. Whether you need a lithium ion battery pack or a backup power supply for your home or business, the Enook Battery Pack is a great choice. With its exceptional performance and long lifespan, it offers reliable power and peace of mind for all of your power needs.

Battery Characteristic Curve

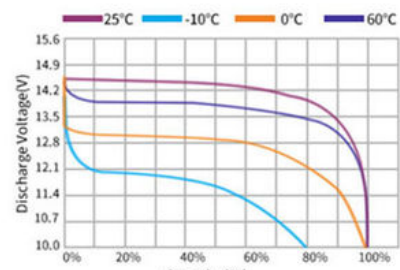
Different Rate Discharge Curve @25°C



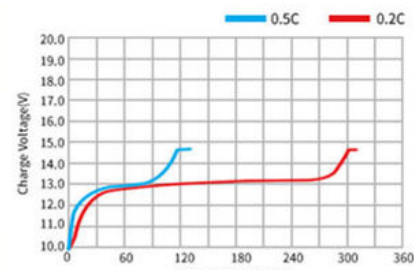
Charge Characteristics of capacity-voltage @0.2C&0.5C, 25°C



Different Temperature Discharge Curve @0.5C, 25°C

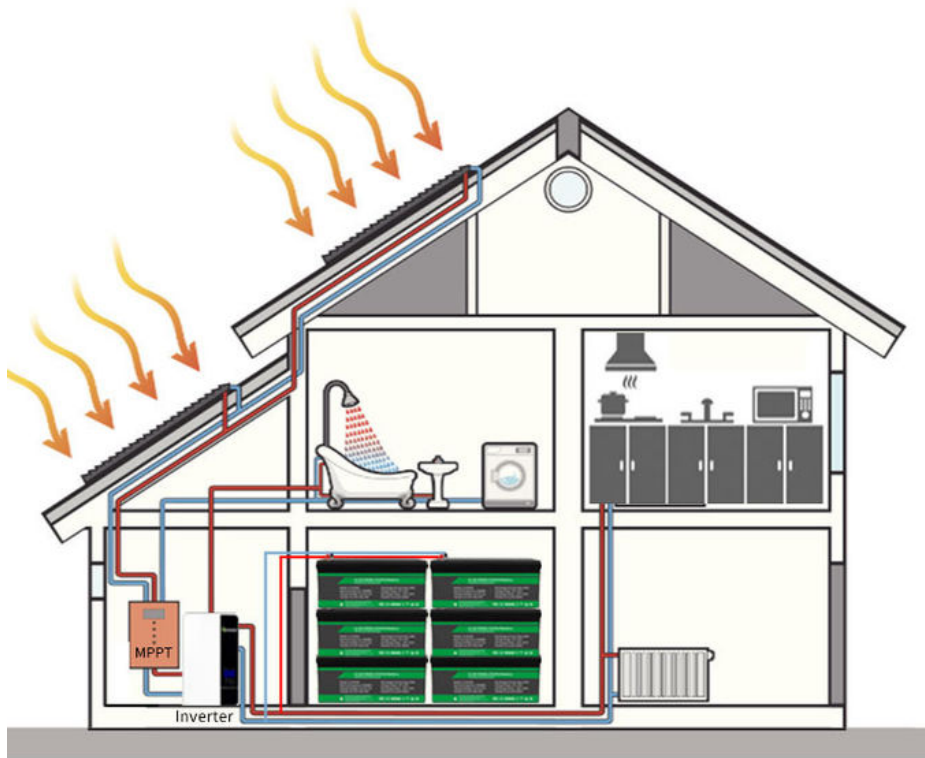


Charge Characteristics of time-voltage @0.2C0.5C, 25°C



Household Energy Storage Usage

6 batteries can be connected in parallel



Application Scope



RV



Marine



Outdoor Activities



Solar



Power Backup

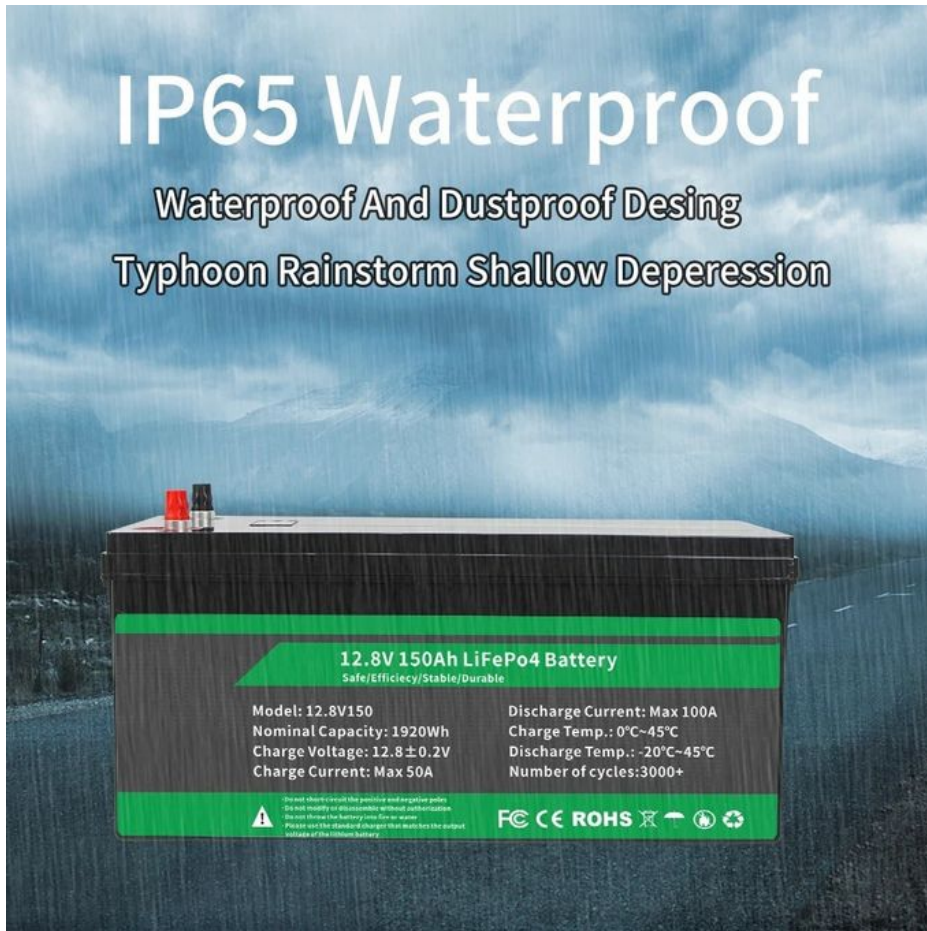


Golf Cart

Customization:

IP65 Waterproof

Waterproof And Dustproof Desing
Typhoon Rainstorm Shallow Deperession



Support and Services:

The Lithium Ion Battery Pack product technical support and services include:

Assistance with initial setup and installation

Troubleshooting and problem-solving for any technical issues

Repair and replacement services

Regular maintenance and inspections to ensure optimal performance and safety

Product training and education for customers and partners

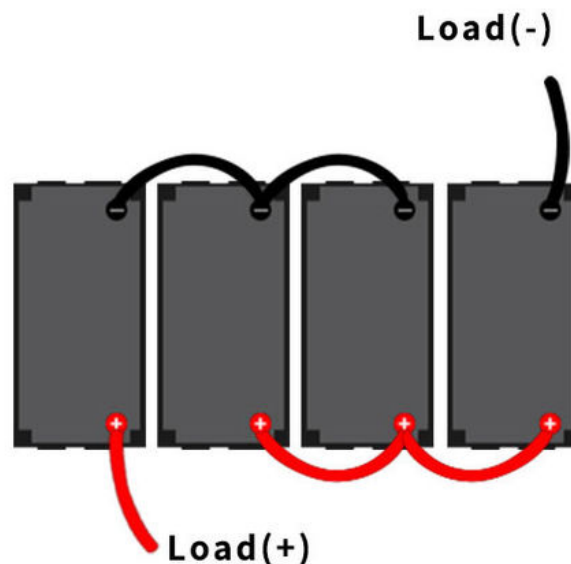
Comparison



✓ Reduced 2/3 weight	Weight	✗ 3 times the weight
✓ 3000+ Cycle	Cycle Times	✗ 200-500 Cycle
✓ >10 Years Service Life	Life cycle	✗ 2-3 Years
✓ Stable and safety	Function	✗ Unsafe and easy To explode

Product Details

Connection In Parallel (Maximum of 4 Batteries)



12v(12.8V)400Ah Battery System



Changsha Enook Technology Co., Ltd



+8617752866093



wendy@enooktech.com



enookbattery.com

ROOM 1717,JIEZUO BUILDING, NO. 828, SECTION 1, FURONG SOUTH ROAD, TIANXIN DISTRICT,
CHANGSHA, HUNAN